

- NOTES
- UNLESS OTHERWISE NOTED ALL DIMENSIONS ARE IN MILLIMETERS.
 - UNLESS OTHERWISE NOTED OUTSIDE PROJECTION OF NOZZLES ARE MEASURED FROM C.I. OF VESSEL TO THE EXTREME FACE OF NOZZLE .
 - ALL WELDS CONTINUOUS EXCEPT NOTED .
 - BOLT HOLES FOR FLANGES SHALL BE STRADDLED TO EQUIPMENT MAIN AXIS
 - ALL R.F. FLANGES SHALL HAVE SMOOTH FINISH FACING WITH RA= 3.2mm TO RA= 6.3mm
 - REINFORCING PADS FOR NOZZLES SHALL BE TAPPED WITH AT LEAST ONE (1) TELL TALE HOLE NPT 1/4" WITH VENT PIPE.
- 1-#3 VENT HOLE
1-NPT 1/4" TELLTALE HOLE W/VENT PIPE
LOWER AXIS
7. GASKET MATERIAL FOR ASME B16.20. SPIRAL WOUND (t4.5)
-FILLER: GRAPHITE
-INNER RING: 304 S.S.
-HOOP: 304 S.S.
-OUTER RING: 304 S.S.
8. SPARE PART (OPTIONAL)
- | CONSTRUCTION & COMMISSIONING | |
|------------------------------|-----------------|
| GASKETS | 100% |
| STUD BOLTS & NUTS | 5% (MIN. 2SETS) |
9. ALL EXPOSED SURFACE SHALL BE PAINTED AS FOLLOWS: EXPOSED SURFACE FOR EXTERNAL PARTS: EI027-HSE-VD-QC-PRO-002
EXPOSED SURFACE OF INTERNAL: NOT PARTS REQUIRED

REFERENCE DRAWING	DWG NO.	REV.
-	-	-

KEY PLAN :



R1	20.09.2024	ISSUED FOR APPROVAL (IFA)	D.SH.	M.O.	A.M.
R0	07.09.2024	ISSUED FOR APPROVAL (IFA)	D.SH.	M.O.	A.M.
REV.	ISSUE DATE	DESCRIPTION	PREPARED	CHECKED	APPROVED

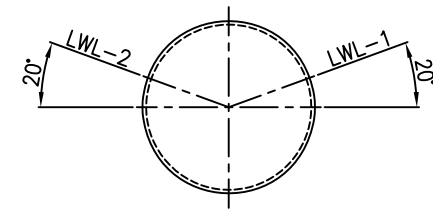
CLIENT

CONSULTING ENGINEER

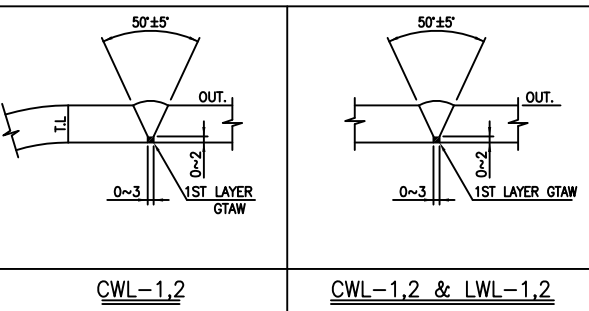
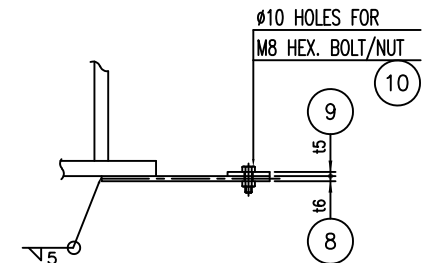
PROJECT: STYRENE PARK OFFSITE


DRAWING TITLE: GENERAL ARRANGEMENT DRAWING FOR RECEIVER HEADER(RU0001A/B-D-02)

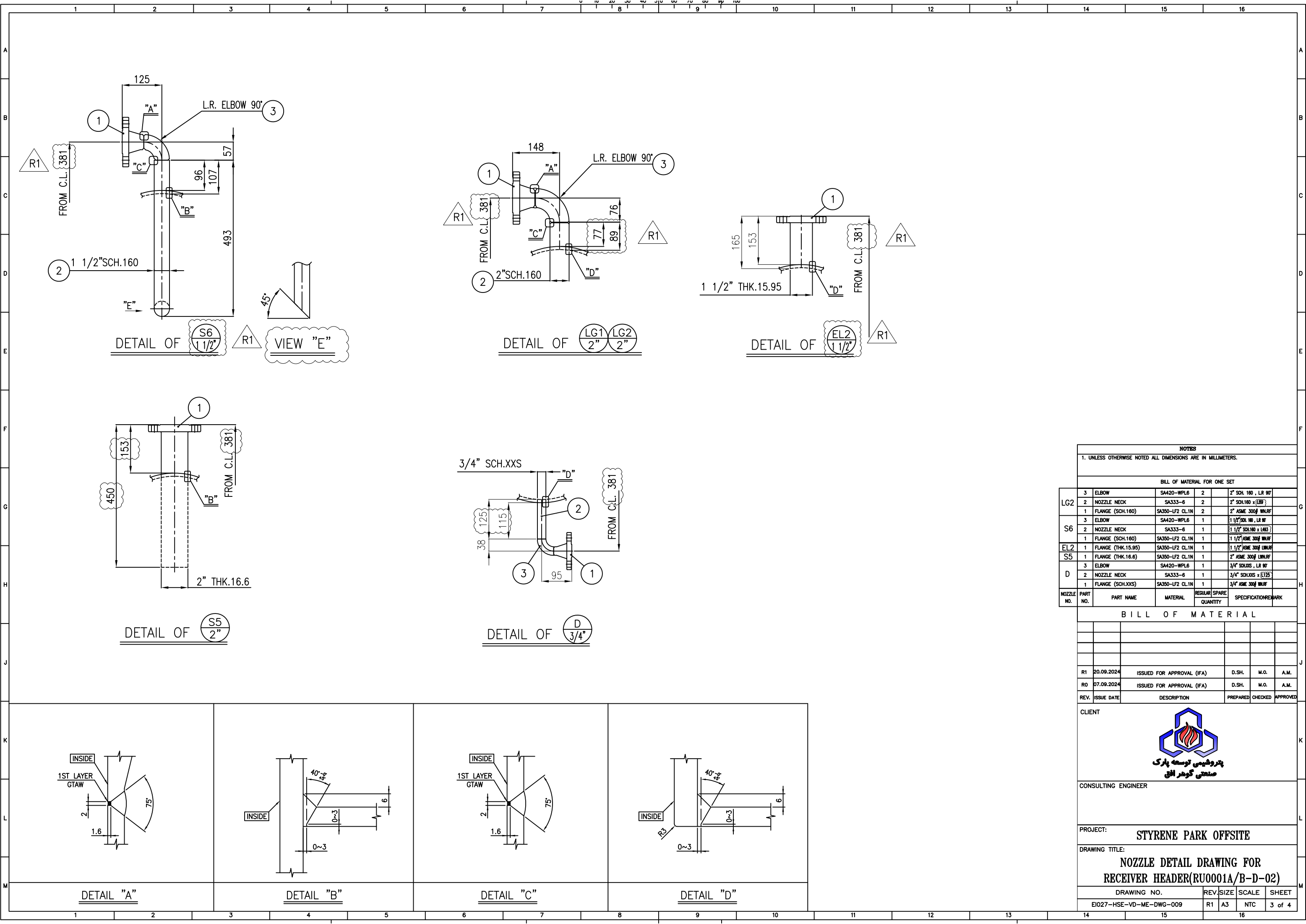
DRAWING NO.	REV.	SIZE	SCALE	SHEET
EI027-HSE-VD-ME-DWG-009	R1	A3	NTC	1 of 4




VIEW "A"



NOTES						
1. UNLESS OTHERWISE NOTED ALL DIMENSIONS ARE IN MILLIMETERS.						
* FOR ONE SET						
12	WASHER	SA283-C	32		116 x 150 (NOT DP ONLY)	
11	SETTING BOLT/2NUTS	SA193-B7/SA194-2H	6SETS		M20 x 1150 (NOT DP ONLY)	
10	HEX. BOLT/NUT	S.S. 304	2SETS		M8 x L25	
9	COPPER PLATE	SEE NOTE "2"	2		15 x 50 x 50	
8	EARTH LUG	RT S.S. 304	2		16 x 50 x 150	
7	SUPPORT RIB	SA283-C	4		110 x 140 x 471	
6	WEB PLATE	SA283-C	2		110 x 471 x 414	
5	BASE PLATE	SA283-C	2		110 x 180 x 500	
4	WEAR PLATE	SA516-70N	2		110 x 190 x 538	
3	HEAD	SA516-70N	2		USED THK.10 (21 ELLIP.)	
2	SHELL	SA516-70N	1		110 x 1900 x 1404	
1	SHELL	SA516-70N	1		110 x 2000 x 1404	
PART NO.	PART NAME	MATERIAL	REGULAR QUANTITY	SPARE	SPECIFICATION	REMARK
BILL OF MATERIAL						
R1	20.09.2024	ISSUED FOR APPROVAL (IFA)		D.SH.	M.O.	A.M.
RO	07.09.2024	ISSUED FOR APPROVAL (IFA)		D.SH.	M.O.	A.M.
REV.	ISSUE DATE	DESCRIPTION		PREPARED	CHECKED	APPROVED
CLIENT						
 <p>پتروشیمی توسعه پارس صنعتی گهر افشان</p>						
CONSULTING ENGINEER						
PROJECT: STYRENE PARK OFFSITE						
DRAWING TITLE: BODY DETAIL DRAWING FOR RECEIVER HEADER(RU0001A/B-D-02)						
DRAWING NO.			REV.	SIZE	SCALE	SHEET
EI027-HSE-VD-ME-DWG-009			R1	A3	NTC	2 of 4



NOTES						
1. UNLESS OTHERWISE NOTED ALL DIMENSIONS ARE IN MILLIMETERS.						
BILL OF MATERIAL FOR ONE SET						
LG2	3	ELBOW	SA420-WPL6	2		2" SCH. 160 , LR 90°
	2	NOZZLE NECK	SA333-6	2		2" SCH.160 x (188)
	1	FLANGE (SCH.160)	SA350-LF2 CL.1N	2		2" ASME 300# WMLRF
S6	3	ELBOW	SA420-WPL6	1		1 1/2" SCH. 160 , LR 90°
	2	NOZZLE NECK	SA333-6	1		1 1/2" SCH.160 x (183)
	1	FLANGE (SCH.160)	SA350-LF2 CL.1N	1		1 1/2" ASME 300# WMLRF
EL2	1	FLANGE (THK.15.95)	SA350-LF2 CL.1N	1		1 1/2" ASME 300# WMLRF
S5	1	FLANGE (THK.16.6)	SA350-LF2 CL.1N	1		2" ASME 300# WMLRF
D	3	ELBOW	SA420-WPL6	1		3/4" SCH.160 , LR 90°
	2	NOZZLE NECK	SA333-6	1		3/4" SCH.160 x (126)
	1	FLANGE (SCH.XXS)	SA350-LF2 CL.1N	1		3/4" ASME 300# WMLRF
NOZZLE NO.	PART NO.	PART NAME	MATERIAL	QUANTITY	REGULAR SPARE	SPECIFICATIONREMARK
BILL OF MATERIAL						
R1	20.09.2024	ISSUED FOR APPROVAL (IFA)			D.SH.	M.O. A.M.
R0	07.09.2024	ISSUED FOR APPROVAL (IFA)			D.SH.	M.O. A.M.
REV.	ISSUE DATE	DESCRIPTION			PREPARED	CHECKED APPROVED
CLIENT						
<div><p>پتروشیمی توسعه پارک صنعتی گودر اقلی</p></div>						
CONSULTING ENGINEER						
PROJECT: STYRENE PARK OFFSITE						
DRAWING TITLE: NOZZLE DETAIL DRAWING FOR RECEIVER HEADER(RU0001A/B-D-02)						
DRAWING NO.				REV.	SIZE	SCALE SHEET
EI027-HSE-VD-ME-DWG-009				R1	A3	NTC 3 of 4
14		15		16		

